

# Plant Health Care Report

Scouting Report of The Morton Arboretum



THE  
CHAMPION  
of TREES

May 1, 2026

Issue 2026.3

For comments regarding PHCR, or to subscribe to email alerts regarding posting of new issues, contact Sharon Yiesla at [syiesla@mortonarb.org](mailto:syiesla@mortonarb.org).

Our report includes up-to-date disease and insect pest reports for northeastern Illinois. For disease and insect problems, contact the Plant Clinic via email at [plantclinic@mortonarb.org](mailto:plantclinic@mortonarb.org) or by phone 630-719-2424 (Monday through Friday, noon to 4 pm).

## Quick View

### What indicator plant is in bloom at the Arboretum?

Bridalwreath spirea (*Spiraea x vanhouttei*) (fig. 1) is coming into flower. When this plant is in full flower, it is an indicator plant for birch leafminer in birch leaves. In late bloom, it is an indicator for bronze birch borer larvae hatching out of eggs.

**Accumulated Growing Degree Days (Base 50) at The Morton Arboretum: 259.5 (as of April 30)**

### Insects/other pests

- Elm flea weevil
- Boxwood psyllid
- Boxwood leafminer
- Boxwood mites
- Hydrangea leaftier

### Diseases

- Ground cover diseases and more
- Cedar-rust diseases
- *Cytospora* canker
- *Rhizosphaera* needle cast

### Weeds

- Poison hemlock

### Native Corner

- No-mow May



Figure 1 Bridalwreath spirea

## Soil temperatures around Illinois (from Illinois State Water Survey)

This information will be provided all season. For data from other reporting stations, go to <https://warm.isws.illinois.edu/warm/soil/> (you will need to set up an account to access data.)

| Max. Soil temps<br>For 4/30/2026 | St. Charles<br>reporting station<br>(north) | Champaign<br>reporting station<br>(central) | Carbondale<br>reporting station<br>(south) |
|----------------------------------|---|---|--|
| 2-inch, bare soil                | 64  | 71.6  | 76.5                                       |
| 4-inch, bare soil                | 59.7  | 67.9  | 71.4                                       |
| 4-inch, under sod                | 56.2  | 66.5  | 69   |
| 8-inch, under sod                | 57.8  | 62.8  | 66.8                                       |

\* This is the maximum soil temperature recorded the day prior to publication of PHCR.

## Seasonal precipitation

| Seasonal precipitation (rain and melted snow) in inches. |                   |                   |                                   |
|--|-------------------|-------------------|-----------------------------------|
|  | 2026              | 2025              | Historical average<br>(1937-2025) |
| Jan  | 2.33              | .97               | 1.95                              |
| Feb  | .14               | 1.3               | 1.79                              |
| Mar  | 5.22              | 4.59              | 2.57                              |
| April  | 5.77 (thru 4/30)  | 3.32              | 3.66                              |
| May  |                   | 1.86 (full month) | 4.14 (full month)                 |
| June   |                   |                   |                                   |
| July   |                   |                   |                                   |
| Aug  |                   |                   |                                   |
| Sept   |                   |                   |                                   |
| Year to date   | 13.46 (thru 4/30) | 12.04 (thru May)  | 14.10 (thru May)                  |

## Degree Days (current and compared to past years) and rainfall

The historical average (1937-2025) for this date at The Morton Arboretum is 50 GDD<sub>50</sub>. The table below shows a comparison of GDD in different years. We are comparing the GDD<sub>50</sub> reported in this issue with the GDD reported in the first issue of last year, 2020 and 2014. These years were selected since publication dates of the first issue were within a day or two of each other. Lisle, Glencoe, and Waukegan (60085) were not used in 2015, so there is 'no report' from those stations.

| Location                 | GDD as of 4/30/2026 | GDD as of 5/1/2025 | GDD as of 4/30/2020 | GDD as of 4/30/2015 |
|--------------------------|---------------------|--------------------|---------------------|---------------------|
| Carbondale, IL*          | 752                 | 545                | 279                 | 333                 |
| Champaign, IL*           | 455                 | 317                | 136                 | 192                 |
| Chicago Botanic Garden** | 248                 | 146                | 58                  | 45                  |
| Glencoe*                 | 80                  | 46                 | 7                   | No report           |
| Chicago O'Hare*          | 273                 | 209                | 76                  | 112                 |
| Kankakee, IL*            | 335                 | 212                | 94                  | 135                 |
| Lisle, IL*               | 287                 | 221                | 83                  | No report           |
| The Morton Arboretum     | 259.5               | 141                | 65                  | 68                  |
| Quincy, IL*              | 532                 | 372                | 185                 | 274                 |
| Rockford, IL*            | 254                 | 166                | 58                  | 84                  |
| Springfield, IL*         | 534                 | 366                | 171                 | 244                 |
| Waukegan, IL* (60087)    | 185                 | 119                | 29                  | 56                  |
| Waukegan, IL* (60085)    | 214                 | 152                | 40                  | No report           |

\*We obtain most of our degree day information from the GDD Tracker from Michigan State University web site. For additional locations and daily degree days, go to <https://gddtracker.msu.edu/>

\*\*Thank you to Elizabeth Cullison, Chicago Botanic Garden, for supplying us with this information.

### How serious is it?

Problems that can definitely compromise the health of the plant will be marked "serious". Problems that have the potential to be serious and which may warrant chemical control measures will be marked "potentially serious". Problems that are seldom serious enough for pesticide treatment will be marked "minor". "Aggressive" will be used for weeds that spread quickly and become a problem and "dangerous" for weeds that might pose a risk to humans.

## Pest Updates: Insects

| Examples of insects that may emerge soon in northern Illinois (based on growing degree days) |                                      |   |                      |
|--|--------------------------------------|---|----------------------|
| GDD (base 50)  | insect                               | Life stage present at this GDD                  | Type of damage       |
| 300-700  | <a href="#">Oystershell scale</a>    | Crawlers emerging                               | Feeding on sap       |
| 400-600  | <a href="#">Bronze birch borer</a>   | Larvae hatching out and beginning to enter bark | Tunneling under bark |
| 400-500  | <a href="#">Pine needle scale</a>    | Crawlers emerging                               | Feeding on sap       |
| 450  | Boxwood leafminer                    | Adults emerging                                 | Laying eggs          |
| 500-700  | <a href="#">Euonymus scale</a>       | Crawlers emerging                               | Feeding on sap       |
| 500-600  | <a href="#">Viburnum crown borer</a> | Caterpillars hatching and entering bark         | Tunnel under bark    |
| 700-800  | <a href="#">Bagworm</a>              | Caterpillars emerging                           | Chewing foliage      |

### **Elm flea weevil (minor)**

One of our scouts has found feeding damage from elm flea weevil (*Orchestes steppensis*) on elm leaves. The weevils overwinter as adults and have now come out to feed and lay eggs. Adult-feeding results in tiny shot holes in the leaves, and heavy feeding can cause newly expanding leaves to wither and turn brown. After feeding, the female weevil cuts a cavity into the leaf mid-vein and inserts an egg. The hatching larvae create blotch-shaped mines (fig. 2) at the leaf tips. Larvae feed for about 2-3 weeks, and then pupate within the mined leaf. Very heavy feeding can reduce photosynthetic capacity of the tree, thereby impacting overall tree vitality.



Figure 2 Adult elm flea weevil damage (holes) and larval damage (blotch mine)

**Management:** Insecticides are effective in controlling adults when they are present. Depending on the insecticide used, more than one application may be needed. Spraying a large elm may not be practical, especially for a pest whose damage is relatively minor. There are systemic products available, if management is needed.

Good website: <https://mortonarb.org/plant-and-protect/tree-plant-care/plant-care-resources/european-elm-flea-weevil/#overview>

### Boxwood psyllid (minor)

Boxwood psyllids (*Cacopsylla buxi*) should be active by now. The psyllids overwinter as tiny orange eggs in the bud scales of the boxwood. As the buds open, the psyllids hatch and begin to feed. The nymphs (fig. 3) are about 1/16th of an inch long, yellowish, and partially covered with a white secretion that protects them from parasitoids and chemical sprays. Their feeding causes cupping of the leaves. If your boxwood had this pest last year, the foliage from last year will show cupping. Newly hatched psyllids will cause cupping on new leaves.



Figure 3 Boxwood psyllid nymphs

**Management:** Damage is mostly aesthetic. Pruning boxwoods reduces the population as the insect or the eggs are removed in the process. This physical removal of infested tissue may be enough to keep the problem in check. We sometimes see ladybugs feeding on the psyllids.

Good website: <https://purdueplantdoctor.com/factsheet/tree-509>

### Boxwood leafminer (potentially serious)

Boxwood leafminer (*Monarthropalpus flavus*) has been a big problem for the last few years, with large populations evident on many boxwoods. They overwinter, as larvae, in the leaves on boxwood. Look for 'blisters' (fig. 4) on the leaves that turn from light green to orange or brown (as the larvae mature). The larvae are inside these blisters. Look carefully, as these blisters are sometimes mistaken for fungal leaf spots. The larva will pupate inside the leaf and emerge as an adult around GDD<sub>50</sub> 450. When the adults emerge, they will be orange and have a mosquito-like appearance.



Figure 4 Spots caused by boxwood leafminers

**Management:** Removing infested foliage now will reduce populations. Insecticides can be sprayed while the adults are emerging.

Good website: [https://www.canr.msu.edu/news/boxwood\\_insect\\_pests](https://www.canr.msu.edu/news/boxwood_insect_pests)

### Boxwood mite (potentially serious)

Boxwood mites (*Eurytetranychus buxi*) are sap feeders, and their feeding leads to marks on the leaves that look like little light-colored squiggles. This mite overwinters as eggs. There can be multiple generations per year. Heavy infestations may lead to defoliation. Boxwood mites are

smaller than two-spotted spider mites and may be difficult to see. The mites and their eggs are found on the lower side of the leaves. Damage seen now may be from last year.

**Management:** Mite populations can be reduced by washing the plant off with a strong stream of water from the garden hose. Be sure to wash off the lower side of the leaves. High populations may need to be treated with a miticide/insecticide.



Figure 5 Boxwood mite damage

### Hydrangea leaftier (minor)

The hydrangea leaftier (*Olethreutes ferriferana*) is an unusual little weirdo that has been showing up for the last several years. We have received reports about this pest already this year. The hydrangea leaftier (tie-er, as in “one who ties leaves together”) is showing up primarily on ‘Annabelle’ hydrangeas (*Hydrangea arborescens* ‘Annabelle’). This little caterpillar will tie leaves together to form a pouch-like structure (fig. 6) at the end of the branch. The caterpillar lives inside. In summer, the caterpillar will go to the ground to pupate. Adult moths will emerge in spring.

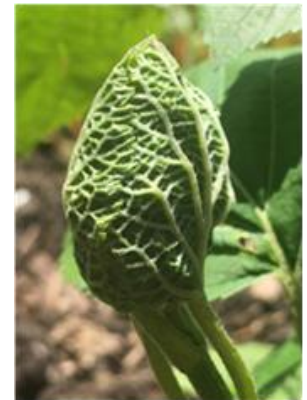


Figure 6 Hydrangea leaftier

**Management:** Hand removal and destruction of the affected leaves is usually sufficient control. Do this as soon as the affected leaves are found so that you get rid of them while the caterpillar is still inside. The caterpillars will drop to the ground to pupate in early summer. Squishing them in the leaf is also very effective, and perhaps therapeutic.

Good website: <https://www.uvm.edu/extension/news/hydrangea-leaftier>

## Pest Updates: Diseases

### Ground cover diseases (serious) and more

The Plant Clinic at the Morton Arboretum is receiving reports of ground covers looking bad coming out of winter. Different ground covers are being affected differently, but the ground covers have one thing in common. They are evergreen ground covers, specifically pachysandra, vinca (periwinkle) and English ivy. Some of the damage appears to be winter damage and that can be cut away to allow new growth to fill in.

Some of that winter damage, however, may have allowed diseases to creep in. This may be linked, in part, to the lack of snow cover this winter.

Evergreen ground covers can be damaged when exposed to the drying winds and harsh sun of winter. This winter had its fair share of windy days and sunny days. Those factors, combined with lack of snow cover, likely lead to some winter damage on these plants. Then, spring turned rainy and disease organisms love water.

Reports of disease have been scattered so far, but here are problems to look for. On pachysandra, Volutella blight is possible. This will cause brown leaf spots which contain concentric circles. Dark stem cankers are also possible.



Figure 7 Bacterial leaf spot on English ivy

On vinca, we may see a fungal problem commonly known as Phoma stem blight. Early symptoms are dark spots on leaves or stems (for photos of symptoms, see the link to Purdue University below under 'good websites'). Under wet conditions, stems are girdled by the disease and the leaves beyond the girdled area will die. Large planting areas can be killed. The fungal spores of Phoma can live in the soil and in infected plant tissue, so replanting of vinca may not be possible.

On English ivy, we could see two diseases, one fungal and one bacterial. A lab test may be needed to verify which disease is present, in order to manage the disease properly. Lab testing in Illinois is available through the [University of Illinois Plant Clinic](#). Residents of other states can find a state lab in their area through the [National Plant Diagnostic Network](#). Both diseases cause leaf spots.

The bacterial leaf spot produces spots that start out light green, with a water-soaked appearance. Later, the spots appear dark and greasy-looking and may have definite margins and a yellow halo visible when the leaf is lifted up to light (fig. 7). Often the spots crack with age and bacterial ooze may emerge from lesions when the conditions are wet and warm. Severe infection can cause leaf distortion, blight, and premature defoliation. The disease can also cause black cankers on stems, killing them.

The fungal leaf spot disease produces spots that are tan to brown and may be irregularly shaped. As the disease progresses, fruiting bodies that look like black specks can be seen within the spots. Lesions may develop on leaf stalks and stems, leading to dieback and defoliation.

**Management:** With all of these diseases, good sanitation is vital. That means removal of all infected plant material, including fallen leaves. Maintaining an open planting bed is important as well. We want to be sure that the ground cover does not become overly dense and we want to rake out leaves that may be falling into the bed from trees above the ground cover. Once sanitation is in hand, fungicides may prevent new infections from occurring on those diseases caused by a fungus. They will not ‘cure’ an existing infection. Because Phoma fungal spores and the bacterium that causes the bacterial leaf spot of English ivy may survive in the soil, it may not be feasible to replant more vinca or English ivy.

Good website: <https://mortonarb.org/plant-and-protect/tree-plant-care/plant-care-resources/ground-cover-diseases/>  
<https://purduelandscapereport.org/article/phoma-stem-blight-of-vinca/>  
<https://extension.psu.edu/english-ivy-hedera-diseases>

### **Cedar rust (unattractive, but generally not life-threatening)**

The cedar-rust diseases are starting to be active on the evergreen host (juniper). We have already seen a small infection of cedar-quince rust on juniper. There are three main rusts on juniper: cedar-apple, cedar-hawthorn, and cedar-quince. Cedar-apple rust and cedar-hawthorn rust both form golf ball-shaped galls (fig. 8) on junipers. During spring rains, the gelatinous telial horns (fig. 9) expand from the golf ball-like galls. Spores are released from the horns and are blown to a host in the rose family, e.g., apples, crabapples, and hawthorns. Orange leaf spots subsequently develop on the rose family plants during the summer.



Figure 8 Cedar-apple rust gall with spore horns emerging

Cedar-quince rust is a bit different. Of the three cedar rust diseases, cedar-quince rust can cause the most damage by infecting fruits and twigs on trees in the rose family, especially hawthorns and serviceberries. Although cedar-quince rust spends part of its life cycle on junipers similar to cedar-apple rust and cedar-hawthorn rust, it does not form galls on the junipers. Cedar-quince rust appears as orange ooze (fig. 10) that seems to be leaking directly from the twigs and branches of junipers. We have seen one sample of cedar-quince rust starting to sporulate. It is possible for all three diseases to be present on the same host at one time.



Figure 9 Jelly like spore horns

**Management:** The disease is usually not serious on the

juniper host. Once the orange jelly horns and ooze stop, the juniper will look fairly normal. No treatment is needed.

Management is usually more focused on the hosts in the rose family. The best management is to plant resistant varieties of crabapples and hawthorns. Remember, resistance is not the same thing as immunity. Being resistant does not mean that the tree will never get rust. It only means that, in an average year, it is less likely for the disease to develop on the host. In a year that is very favorable to the fungus, even resistant trees may show some signs of disease. When considering the purchase of a new crabapple, check with your local nursery about which rust-resistant cultivars they offer. Chemical control for rose family hosts, if used, needs to start as leaves are emerging and when the telial horns are expanding on junipers. Although the rust diseases will cause orange spots on leaves and infect fruit, actual long-term damage is mostly minor, and may not require treatment. Cedar-quince rust can lead to stem swelling on hawthorn, and those swellings can lead to dieback on infected twig tips. Dead branch tips should be pruned out.



Figure 10 Cedar-quince rust

Good web sites: <https://mortonarb.org/plant-and-protect/tree-plant-care/plant-care-resources/cedar-rust-diseases/#overview>

<https://extension.umn.edu/plant-diseases/cedar-apple-rust>

### ***Cytospora* canker (potentially serious)**

We continue to see a lot of dieback on spruces, as we have for the past several years. One source of this dieback is *Cytospora* canker. This fungal disease is common on stressed spruces. *Cytospora* canker is more common on trees that are older than 15 years, because younger trees are more vigorous. Because we have been having so much environmental stress (drought, flooding, etc.), this disease has become very prevalent in the landscape. The disease usually starts on the lower branches of the tree and progresses upwards. Needles turn brown and finally drop, leaving dry, brittle twigs and branches. The fungus often enters the tree through wounds, but on trees that are highly stressed, the pathogen may enter through natural openings. Cankers develop under the bark. A thin coating of white resin (fig. 11) is generally found on infected twigs and trunks.



Figure 11 Sap flow due to *Cytospora* canker

**Management:** Since *Cytospora* canker is a stress-related disease, at a minimum, trees should be kept mulched and watered well during dry periods. Remove infected branches promptly during dry weather to reduce the spread of the disease. It is imperative to clean pruning tools between cuts. Give newly planted spruces adequate space as dense planting is another common predisposing stress factor. If it is necessary to remove trees, it would be wise to consider diversifying the planting, rather than replanting with more spruces. Having a number of the same plant in the landscape can magnify a disease problem. There is no effective chemical control.

Good website: <https://mortonarb.org/plant-and-protect/tree-plant-care/plant-care-resources/cytospora-canker/>

### ***Rhizosphaera* needle cast (serious)**

Another cause of dieback on spruces is *Rhizosphaera* needle cast, caused by the fungus *Rhizosphaera kalkhoffii*. This disease infects needles on the lower branches first and gradually progresses up the tree. Infection occurs on new needles as they are emerging, but symptoms do not appear until late fall or the following spring. Infected needles initially turn yellow, and small black dot-like fruiting bodies (fig. 12) can be seen with a hand lens, erupting through the stomata of the needles. Later, the needles turn purple to brown and begin to drop. It may take 12-15 months from the time of infection for all these symptoms to develop. Although trees are not immediately killed by this pathogen, trees which lose needles for 3 to 4 consecutive years may die. If left unchecked, the disease can turn the tree into an undesirable landscape specimen in two to three years. Colorado blue spruce is highly susceptible to *Rhizosphaera* needle cast. White spruce is moderately susceptible and Norway spruce is relatively resistant. Hosts in other genera include true firs, Douglas-fir, and pines.

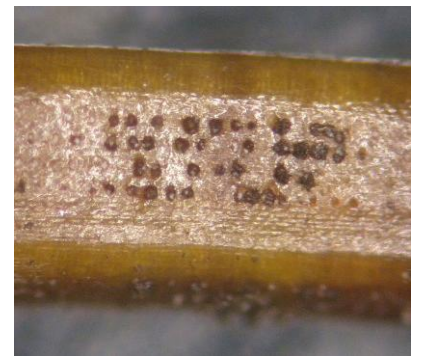


Figure 12 Fruiting bodies of *Rhizosphaera* emerging from stomates on spruce needle

**Management:** Prune off dead or diseased branches and provide adequate spacing between trees to improve air movement. Chemical controls are most effective if the disease is detected early. Fungicides treatment should begin when needles are half-grown (as soon as bud caps fall off). Follow label directions for timing of additional treatments. Two years of applications are usually recommended.

Good website: <https://mortonarb.org/plant-and-protect/tree-plant-care/plant-care-resources/rhizosphaera-needle-cast/>

## Pest Updates: Weeds

### Poison hemlock (dangerous)

The Plant Clinic has already received several reports of [poison hemlock](#) (*Conium maculatum*). This weed has been fairly prominent for the last few years, not only in home gardens, but popping up along the side of the road in many areas. Poison hemlock (fig. 13) is a member of the carrot family (which contains both edible and toxic plants, so beware!!). Most members of this family have the same type of umbrella-shaped flower cluster known as an umbel. Because the flower cluster of Queen Anne's lace and the flower cluster of poison hemlock look similar, plants may be incorrectly identified. This can lead to contact with a dangerous plant.



Figure 13 Poison hemlock, first year plant (photo S Yiesla)

Poison hemlock is a large, non-native plant, often six to ten feet tall. The smooth stem is stout, has a ridged appearance, and is marked with purple spots (fig. 14). The stem is hollow. Leaves are large and very ferny in appearance (fig. 15). Poison hemlock is a biennial plant, which means it will form foliage in the first year and flower and set seed in the second year. Plants in their second year will have the typical white flower cluster (umbel) of the carrot family. Queen Anne's lace has one red floret in the center of its flower cluster while poison hemlock does not.



Figure 14 Spotted stem of poison hemlock (photo S. Yiesla)

All parts of the plant are toxic and may lead to death if ingested. The plant's sap may be absorbed through cuts in the skin, so long sleeves and gloves will be needed when handling the plant. Sap can also be absorbed if it comes in contact with mucus membranes (eye or nose).

**Management:** Plants can be cut down or dug out. This should be done before the plants go to seed and is most easily done when plants are small. Cover your skin during this process. In spring, small, actively growing plants may be treated with a non-selective herbicide.



Figure 15 Leaves of poison hemlock (photo: S. Yiesla)

Good websites: <https://mortonarb.org/plant-and-protect/trees-and-plants/poison-hemlock/#overview>

<http://hyg.ipm.illinois.edu/article.php?id=380>

<https://www.extension.purdue.edu/extmedia/fnr/fnr-437-w.pdf>

## **Native Corner:**

### **No-mow May**

No-mow May is an idea that has become popular in the last few years. The general concept is to stop mowing the lawn in May to allow flowering plants like dandelions, violets and white clover to actually flower and provide nectar and pollen for pollinating insects. That sounds like a good concept, and to a certain point, it is. There is certainly an upside to having more flowers for the pollinators in early to mid-spring.

There can, however, also be some less than positive consequences. Leaving a lawn unmown for a month can lead to problems. Once you have allowed these plants (many considered to be weeds) to flower, will you be able to regain control of your lawn? A lawn overrun with weeds, can lead homeowners to turn to pesticides to control those weeds. We have to consider how that may impact the environment and our pollinators. It makes no sense to attract pollinators to our lawns, only to spray those same lawns later with products that may harm the pollinators. Also, just trying to get a home lawnmower through 4 weeks of lawn growth may be a bit challenging.

An unmown lawn may be a great place for woody weeds, like buckthorn and mulberry, to take up residence. It may also be a great place for all the maple seeds that may be falling from the trees to start a small forest in your yard.

In many municipalities there are ordinances against unmown lawns. Your city may choose to fine you if they don't support the no-mow May agenda.

There is a simple and positive way to help pollinators in spring (and through the rest of the growing season). Plant more flowers in our gardens! (fig. 16) Any plant that has a showy, colorful flower will serve pollinators. We may just need to put a little more effort to plant some of the plants that will flower in the early part of the season. There are actually a lot of choices. Spring wildflowers like Virginia bluebells, Dutchman's breeches, spring beauty and toothwort fill our woodlands with flowers in spring. The woods are also filled with pollinators looking for those flowers. Plant some of these wildflowers in your yard and the pollinators will find them.



**Figure 16** A garden with spring wildflowers may serve pollinators better than an unmown lawn (photo: S. Yiesla)

Spring flowering trees, like redbud (fig. 17), serviceberry and crabapple are also a good choice and some of these may already be in your yard. Even non-native flowering plants like crocus, hyacinth, bleeding heart and hellebores will serve pollinators well. Remember that many non-native plants are well behaved and are not invasive.



Figure 17 Spring flowering trees like redbud will also serve pollinators (photo: S. Yiesla)

Adding spring-flowering plants is a great way to provide food for pollinators. Don't forget to have a variety of plants flowering in your garden throughout the season to keep the food supply going for those pollinators. Every garden that includes flowering plants is a pollinator garden. As an added bonus, you will have a great looking garden all season long.



***Bartlett Tree Experts, Presenting Sponsor of the Plant Clinic.***

The Plant Health Care Report is prepared by Sharon Yiesla, M.S., Plant Knowledge Specialist and edited by Fredric Miller, Ph.D., Research Entomologist at The Morton Arboretum; and Juluia Lamb, Arboretum Volunteer. The information presented is believed to be accurate, but the authors provide no guarantee and will not be held liable for consequences of actions taken based on the information.

Thank you...I would like to thank all the staff and volunteers that report disease and pest problems when they find them. Your hard work is appreciated. Our volunteer scouts are Deb Link, Maureen Livingston, Loraine Miranda, Molly Neustadt and Moira Silverman.

Literature/website recommendations:

Indicator plants are chosen because of work done by Donald A. Orton, which is published in the book Coincide, The Orton System of Pest and Disease Management.

Additional information on growing degree days can be found at:

[http://www.ipm.msu.edu/agriculture/christmas\\_trees/gdd\\_of\\_landscape\\_insects](http://www.ipm.msu.edu/agriculture/christmas_trees/gdd_of_landscape_insects)  
[http://extension.unh.edu/resources/files/Resource000986\\_Rep2328.pdf](http://extension.unh.edu/resources/files/Resource000986_Rep2328.pdf)

This report is available as a PDF at The Morton Arboretum website at <https://mortonarb.org/about-arboretum/plant-health-care-report/>

For pest and disease questions, please contact the Plant Clinic. You can contact the Plant Clinic via email at [plantclinic@mortonarb.org](mailto:plantclinic@mortonarb.org) . Emails will be answered during business hours Monday through Friday. You can call the Plant Clinic (630-719-2424) or visit in person, Monday thru Friday noon to 4 pm. Inquiries or comments about the PHCR should be directed to Sharon Yiesla at [syiesla@mortonarb.org](mailto:syiesla@mortonarb.org) .

Copyright © 2026 The Morton Arboretum

## 2026 Plant Health Care Report Index



Following is an index of the various subjects in this year’s report. The number after each subject is the report number. For example, using the chart below, *Ficaria verna*..... 1 means that it was discussed in the PHCR 2026.01 or the newsletter dated April 3, 2026. The index is updated with the publication of each full issue and is included at the end of each full issue.

2026.1            April 3  
2026.2            April 17  
2026.3            May 1

|  |   |   |   |
|--|---|---|---|
| Black knot.....                        | 2 | Garlic mustard .....                      | 2 |
| Boxwood blight or something else ..... | 2 | Ground cover diseases and more .....      | 3 |
| Boxwood leafminer.....                 | 3 | Hydrangea leaf-tier .....                 | 3 |
| Boxwood mites .....                    | 3 | Indicator plants, what they tell us ..... | 1 |
| Boxwood psyllid .....                  | 3 | No-mow May .....                          | 3 |
| Cedar-rust disease .....               | 3 | Pestalotiopsis on arborvitae.....         | 2 |
| Crabgrass preventer .....              | 1 | Poison hemlock.....                       | 3 |
| Creeping bellflower.....               | 2 | Rhizosphaera needlecast.....              | 3 |
| Cytospora canker .....                 | 3 | Scale, magnolia .....                     | 1 |
| Eastern tent caterpillar .....         | 2 | Spongy moth.....                          | 2 |
| Egg masses and more .....              | 1 | Spotted lanternfly.....                   | 2 |
| Elm flea weevil .....                  | 3 | Tools you can use .....                   | 1 |
| European pine sawfly.....              | 2 | Using growing degree days.....            | 1 |
| <i>Ficaria verna</i> .....             | 1 | Viburnum leaf beetle.....                 | 2 |
| Fungicides, timing .....               | 1 | Weather, climate and water.....           | 1 |
| Garden cleanup and native plants ..... | 2 |   |   |